

TATA
PUNCH



VIBES WITH YOU

NOW WITH
3 years | 100 000 km
WARRANTY

GLOBAL  NCAP
2021 TEST (2 airbags)

 ★★★★★
★★★★★

#SAFERCARSFORINDIA

VIBES WITH YOUR STYLE

The world will take notice of two showstoppers. You and the Punch.





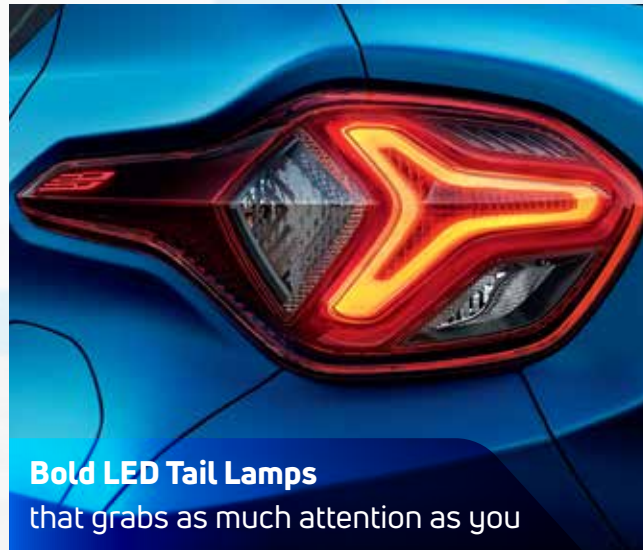
90-Degree Opening Doors
for a hassle-free entry and exit



Projector Headlamps & LED DRLs
that shine as bright as you



R16 Diamond Cut Alloy Wheels
that adds to the Punch's SUV stance



Bold LED Tail Lamps
that grabs as much attention as you



Stylish Roof Rails & Shark Fin Antenna
that adds to the Punch's aura

More Of Stylish Exteriors

Signature Humanity Line | Cladding On Doors | Wheel Arches & Sill Cladding | Dual Tone Contrast Roof

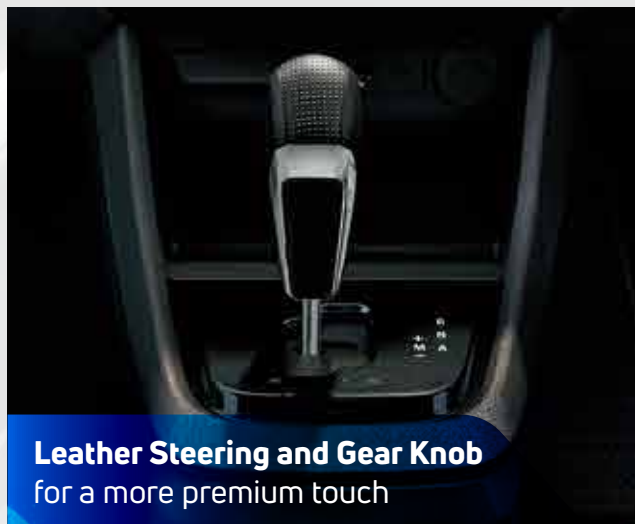


VIBES WITH YOUR SWAG

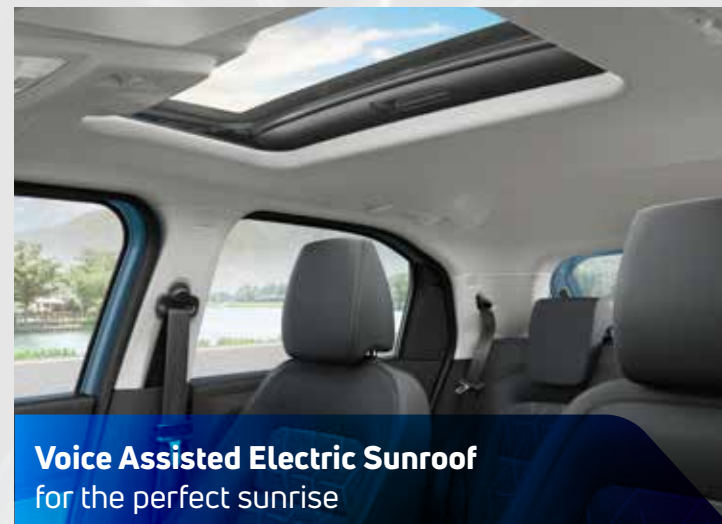
The Punch has a premium-looking stylish dashboard that makes the inside look as cool as it does outside.



Spacious interiors with front arm rests
because nobody likes to feel cramped up



Leather Steering and Gear Knob
for a more premium touch



Voice Assisted Electric Sunroof
for the perfect sunrise

More Of Stylish Interiors

Body-coloured Air Vents | D-cut Steering Wheel | Dual Tone Dashboard Layout

VIBES WITH YOUR NEED FOR COMFORT

Sit back and relax. Cruise with your gang. Make room for more fun.





Automatic Climate Control With Express Cool
adjusts the temperature automatically



Push Start/Stop Button
that needs a touch of a finger



Auto Fold ORVM
that open & close automatically



Rear Arm Rest
for that royal feeling

More Of Comfort

Rear Wiper & Wash | Front Power Outlet | Fast USB Charger

VIBES WITH YOUR GANG

So comfortable that it vibes with all the 5 passengers inside. You, the navigator next to you and the three resident DJs at the back.





Spacious Boot
for that extra luggage



High Seating With Height Adjustable Driver Seat
for a commanding driving position and better visibility



Over 25 Utility Spaces
so that you can easily store all that you need



Cooled Glove Box
for the cool ones who love to stay cool

More Of Convenience

Rear Parcel Tray | Tilt Steering | One-shot-down Driver Window | Follow-me-home Headlamps

VIBES WITH YOUR LEVEL OF SAFETY

With the highest level of safety ratings, the Punch is for the fun-lovers and most importantly, the responsible ones.





5-Star GNCAP Safety Rating



Dual Airbags
are offered as standard



Front Fog Lamps With Cornering Function
for added safety



Reverse Parking Camera
allows you to reverse without a worry



Auto Headlamps & Rain Sensing Wipers
for a hassle-free drive

More Of Safety

Fortified Cabin | ISOFIX | Puncture Repair Kit | iTPMS | Puddle Lamps | Rear Defogger | ABS & EBD With Brake Sway Control

VIBES WITH YOUR THIRST FOR PERFORMANCE

*The Punch's performance will be the second reason for the world to be jealous.
The first will be seeing you behind the wheel.*





187 mm Ground Clearance

because potholes and high speed-breakers are in vogue too



Cruise Control

for a relaxed highway drive



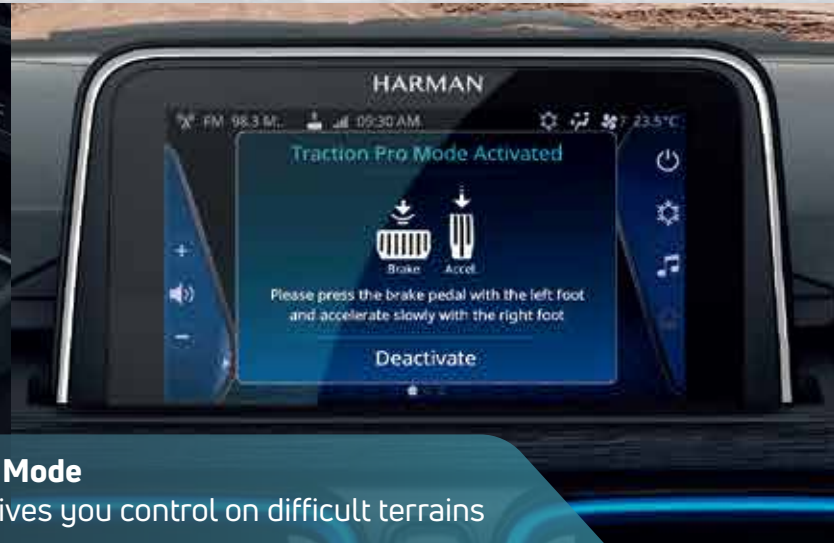
1.2 l Revotron Engine With DynaPro Technology

will make you love
the SUVness of the Punch



5-speed AMT With Traction Pro Mode

is an industry-first feature that gives you control on difficult terrains



More Of Performance

ISS - Idle Stop Start | Eco & City Drive Modes

VIBES WITH YOUR LOVE FOR ENTERTAINMENT

The Punch loves to entertain, just like you, with state-of-the-art technology that keeps you connected.





Floating 17.78cm Touchscreen Infotainment by Harman™
with Android Auto™ and Apple CarPlay™



Steering Mounted Control
that has everything in one place



4 Speakers and 2 Tweeters
so that you can listen to your jam and do much more



17.78cm TFT Instrument Cluster
that is informative & in vogue

More Of Technology

ConnectNext® App Suite | WhatsApp & SMS Readout | Personalised Wallpaper | Video Playback

VIBES WITH YOUR LOVE FOR TECH

It's got iRA – the connected car technology from Tata Motors that's in sync with India.



what3words takes you anywhere using just 3 simple words



Natural Voice Tech that understands English, Hindi and Hinglish



Tribes is an offering that allows you to chill with fellow Punch owners

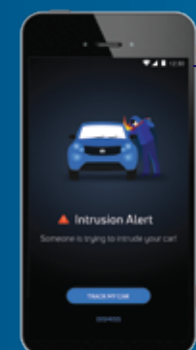


REMOTE VEHICLE CONTROL
Redefines convenience by accessing and controlling your car remotely through your smartphone.

Connected Car Safety redefines car safety with tech innovations



FIND MY CAR
Track the live location of your car and set a geo-fence perimeter to receive instant notification on breach.



INTRUSION ALERT
Ensure peace of mind with instant notification alerts.



Stay connected to your Punch wherever you are with iRA*

REMOTE COMMANDS



- Remote Lights On/Off
- Remote Lock/Unlock
- Remote Horn

VEHICLE SECURITY FEATURES



- Intrusion Alert
- Remote Immobilisation
- Emergency SMS
- Speed Alert
- Panic Notification
- Find My Car

LOCATION-BASED SERVICES

- Nearest TML Service Station
- Roadside Assistance
- Navigation (Maps Integration)
- Weather Updates
- Share Location
- Valet Mode
- Geo-fencing
- Time Fencing

OVER THE AIR UPDATES

- Over the Air Updates for Telematics ECU



LIVE VEHICLE DIAGNOSIS

- View Car Health Dashboard
- Alerts about Critical Car Parameters
- Custom Messages on Cluster e.g. "Happy Birthday"



GAMIFICATION

- Most Efficient Users Of The Week/Month (Driving Score basis)
- View Trip Details and get Drive Pattern Analytics with Driver Score



OMG! it's CNG!

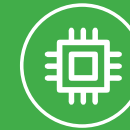


The PUNCH iCNG is powered by a 1.2L engine that offers incredible performance. The advanced iCNG technology delivers a perfect combination of power and pickup that is bound to make you go OMG! it's CNG!



INNOVATIVE TWIN CYLINDER TECHNOLOGY

What makes the PUNCH iCNG truly stand apart is the intelligent placement of the twin CNG cylinders below the luggage area that allows for a big boot space unlike any other CNG car.



SINGLE ADVANCED ECU

For effortless shifting between CNG and petrol mode while maintaining higher fuel efficiency.



DIRECT START IN CNG

Quit switching modes manually. Start your vehicle directly in the CNG mode.



LEAK DETECTION

The iCNG Technology immediately detects a gas leak and switches from CNG to petrol mode.



THERMAL INCIDENT PROTECTION

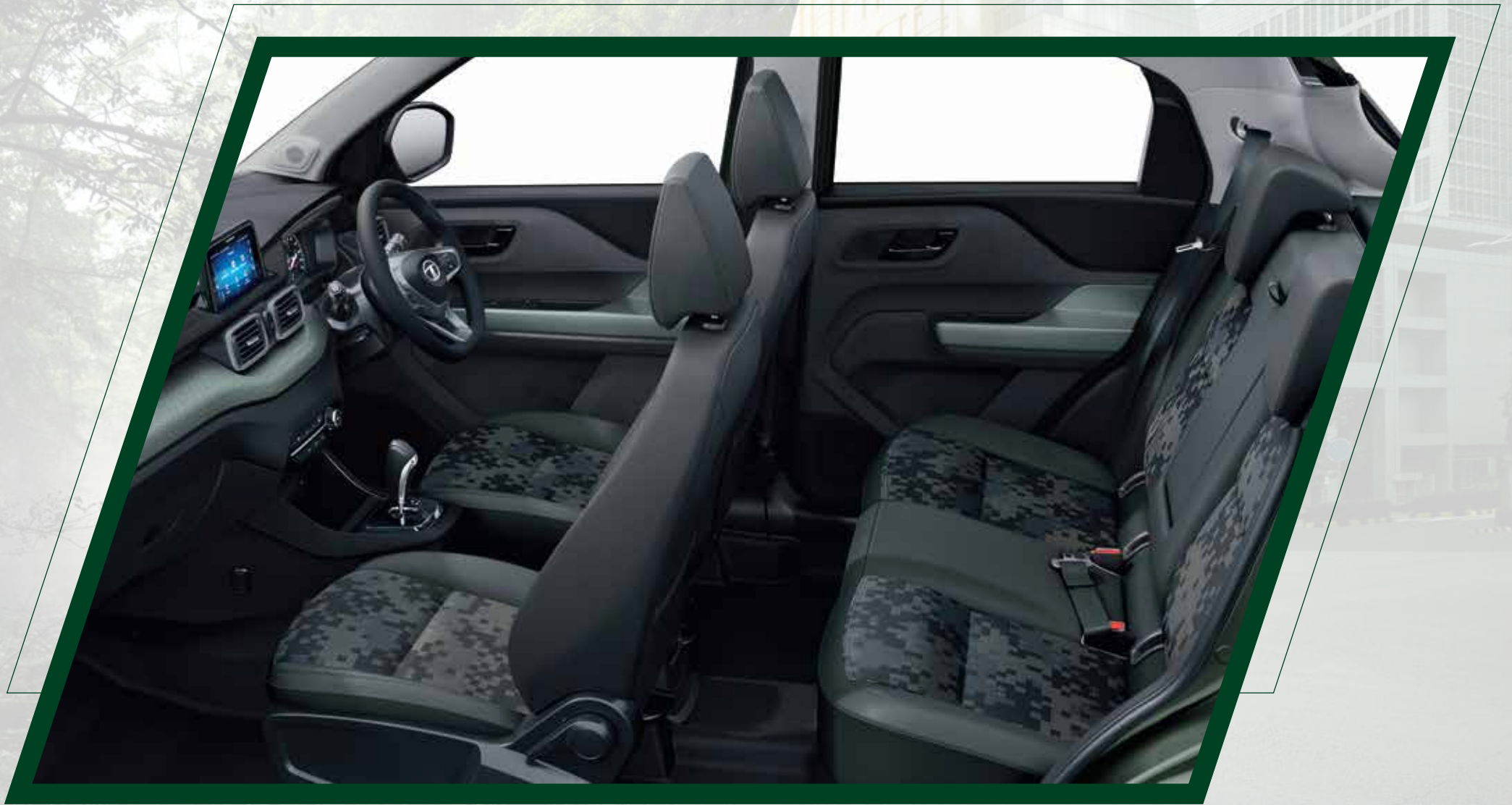
The iCNG Technology immediately cuts off CNG supply to the engine in case of thermal incident and releases gas from the cylinder directly into the atmosphere through a special nozzle as a measure of safety.

#1* refers to introduced by Tata motors Passenger Vehicles and Industry represents the Passenger Car segment.

PUNCH CAMO

THE NO-LIMITS VIBE





Experience the no-limits vibe in premium fabric seats with a supreme knit and CAMO inserts

FLAGSHIP FEATURES OF THE PUNCH CAMO

- ❖ *Foliage Green dual tone exterior with contrast of Piano Black or Pristine White roof*
- ❖ *Stylish Gun metal Skid Plate**
- ❖ *CAMO mascot on the fender*
- ❖ *R16 Charcoal Alloys*
- ❖ *Tri-arrow themed dashboard with Military Green colour*

WHATEVER BE YOUR PERSONA, THE PUNCH VIBES WITH YOU

Now choose the colour that best suits you.



Colours(L-R)

Front Row: Atomic Orange With Black Roof | Tornado Blue With White Roof | Calypso Red With White Roof

Back Row: Orcus White With Black Roof | Daytona Grey With Black Roof | Tropical Mist With Black Roof | Meteor Bronze With Black Roof



PURE (MT)

Features

- Dual Airbags
- ABS EBD
- Rear parking sensor
- ISOFIX Provision
- Central Locking With Key
- Brake Sway Control
- Front Power Windows
- Tilt Steering
- 90-Degree Door Opening
- Rear Flat Floor
- LED Indicators
- Black ODH
- Door, Wheel Arch & Sill Cladding
- IAC + ISS Technology (Petrol only)

Available in CNG



ADVENTURE (MT / AMT)

Features

- All Features Of Pure +
- Floating 8.89cm Infotainment
 - 4 Speakers
 - Steering Mounted Control
 - USB Charging Port
 - ORVM With Electrical Adjustment
 - All Power Windows
 - Follow-me-home Headlamps
 - Anti Glare IRVM
 - Central Remote Locking With Flip Key
 - Full Wheel Covers
 - Body Coloured ORVM, ODH

Available in CNG

ACCOMPLISHED (MT / AMT)

Features

- All Features Of Adventure +
- Floating 17.78cm Touchscreen Infotainment By Harman™
 - 2 Tweeters
 - AA / ACP
 - Reverse Parking Camera
 - LED Tail Lamps
 - Front Fog Lamps
 - R15 Hyper Style Wheels
 - Push Button Start/Stop
 - One-touch-down Door Window
 - Driver Seat Height Adjustment
 - Front A and C type USB **NEW**
 - Rear A type USB **NEW**
 - Front seat Armrest **NEW**
 - Cruise Control (Petrol only)
 - Traction Pro (AMT Only)



Available in CNG

CREATIVE (MT / AMT)

Features

- All Features Of Accomplished +
- Projector Headlamps
 - LED DRLs
 - R16 Diamond Cut Alloys
 - Roof Rails
 - 17.78cm TFT Instrument Cluster
 - Auto Headlamps
 - Rain Sensing Wipers
 - Auto Folding ORVMs
 - Fully Automatic Temperature Control
 - Cooled Glove Box
 - Rear Wiper + Wash
 - Rear Defogger
 - Puddle Lamps
 - Rear Seat Arm Rest
 - Leather Steering & Gear Knob
 - Express Cool **NEW**
 - iTPMS **NEW**
 - Driver One Touch Up Window With Anti-pinch Guard **NEW**



Available in CNG

Custom Packs

PURE

Rhythm Pack

- Floating 8.89cm Screen Infotainment
- 4 Speakers + Steering Audio Controls

ADVENTURE

Rhythm Pack

- 17.78cm Infotainment Screen By Harman™
- 2 Tweeters
- AA / ACP
- Reverse Parking Camera

ACCOMPLISHED

Dazzle Pack (Petrol only)

- R16 Diamond Cut Alloys
- LED DRLs
- Projector Headlamps
- A Pillar Black Tape

Sunroof Pack (Petrol only) **NEW**

- Electric Sunroof with voice assist
- Auto Headlamps
- Rain sensing wipers
- Roof Rails
- Shark Fin

CREATIVE

Sunroof Pack (Petrol only) **NEW**

- Electric Sunroof with voice assist
- Shark Fin

Flagship (Petrol only) **NEW**

- Electric Sunroof with voice assist
- Shark Fin
- iRA Connected Tech

NOW WITH
3 years | 100 000 km
WARRANTY

TECHNICAL SPECIFICATIONS

Engine		
Type	1.2 l Revotron Petrol Engine	1.2 l Revotron CNG Engine
Fuel	Petrol	Petrol + CNG
Capacity, Cylinders	1199 cc, 3 Cylinders	
Max Power: PS (kw) @rpm	87.8PS @ 6000rpm (64.6 KW)	CNG Mode - 73.5PS @ 6000rpm (54KW) Petrol Mode - 87.8PS @ 6000rpm (64.6 KW)
Max Torque: Nm@rpm	115 Nm @ 3250 +/- 100 rpm	CNG Mode - 103 Nm @ 3250 rpm Petrol Mode - 115 Nm @ 3250 +/- 100 rpm
Transmission		
Type	5 Speed Manual/5 Speed AMT	5 Speed Manual
Dimensions		
Length x Width x Height (mm)	3827 x 1742 x 1615	
Wheelbase (mm)	2445 mm	
Ground Clearance(Unladen)(mm)	187 mm	
Boot Space (litre)	366 litres (as per ISO V215), 319 litres (as per ISO 210)	210L
Brakes		
Front, Rear	Front (Disc); Rear (Drum)	
Suspension		
Front	Independent, Lower Wishbone, Mcpherson Strut With Coil Spring	
Rear	Semi-independent Twist Beam With Coil Spring And Shock Absorber	
Wheels & Tyres		
Type	Steel Wheel With Wheel Covers / Hyper Style Wheels / Alloy Wheels	
Size	Creative: 195/60 R16 (Radial-Tubeless) Pure / Adventure / Accomplished: 185/70 R15 (Radial-Tubeless) Accomplished Dazzle S: 195/60 R16 (Radial-Tubeless)	Pure / Adventure / Accomplished: 185/70 R15 (Radial-Tubeless) Accomplished Dazzle S: 195/60 R16 (Radial-Tubeless)
Spare	185/70 R15 Steel Wheels	
Fuel Tank		
Capacity (litres)	37 L	Petrol : 37 L, CNG : 60 L (Water Capacity)

Colours

PURE

ADVENTURE

ACCOMPLISHED

CREATIVE

f/officialtatamotorscars | /TataMotors_Car | /tatapunchofficial | /tatamotorsgroup | Download the ConnectNext App

Above mentioned features are key differentiating features. For detailed list / features / specifications, please visit our website <https://cars.tatamotors.com/suv/punch> Images and illustrations are indicative and for informative purposes only. All features/specifications are not available in all variants and may vary for different variants. Specifications/features subject to change without prior information. Please consult an authorised Tata Motors dealer for latest information on features/specifications before deciding to place an order. Colours may not match the actual colours due to printing limitations. Above Packs are specific to Petrol Variants, for CNG variants please refer to CNG brochures.

Download the Tata Motors' Connected-car App, iRA

Toll Free Number:
CALL: 1800 209 8282 or
VISIT www.cars.tatamotors.com

Tata Motors Passenger Vehicle Business Unit,
Tata Motors Limited, 4th Floor, Ahura Centre, Mahakali Caves Road,
MIDC, Andheri (East), Mumbai 400093.